

# The Renegade

by Varsity Water Systems

## A GAMEPLAN BUILT FOR YOU



### FULLY CUSTOMIZED

System and media tailored to your unique water



### EFFICIENT OPERATION

Advanced technology reduces water usage



### BUILT TO LAST

High quality, non-corrosive parts



### PROTECT YOUR HOME

High-capacity, effective delivery



## A tailored system to tackle *any issue!*

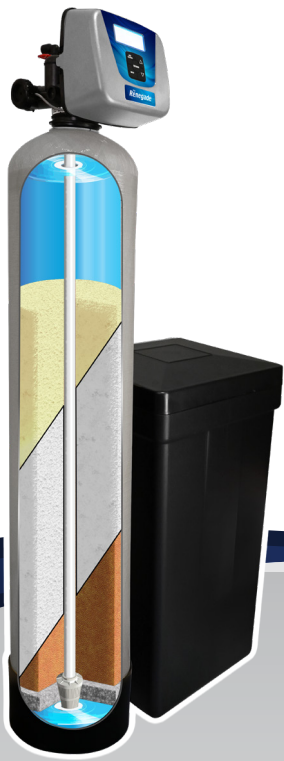
The possibilities of well water issues are nearly endless! With the help of **The Renegade**, so are the options to treat those issues efficiently.

The combination of quality manufactured systems and specialty medias hand-selected by our water experts creates the ultimate customized solution.



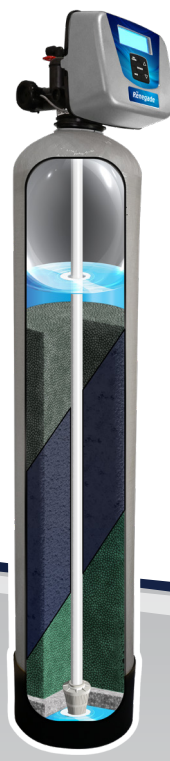
Brine tank optional





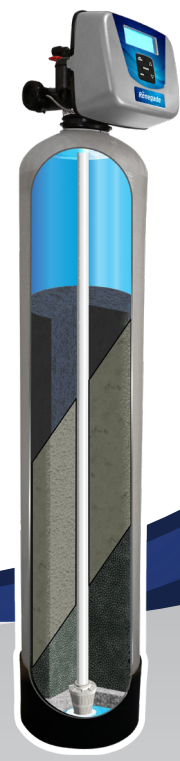
## *The Renegade* **Exchange Softener**

- Designed for dissolved contaminants
- Can be configured to capture positively or negatively charged ions
- Low maintenance brine tank with sensors to prevent overflow
- Optional salt monitor available for convenient refill reminders
- Predictive regeneration automatically adjusts to changes in your water usage habits
- Made in the U.S.A.



## *The Renegade* **Air-Injected Filter**

- Designed for dissolved contaminants
- Compressed air chamber provides oxidation to convert contaminants into particles
- Specialized media captures particles to remove them from the water
- Blended medias may be used to resolve multiple issues
- Predictive regeneration automatically adjusts to changes in your water usage habits
- Made in the U.S.A.



## *The Renegade* **Backwashing Filter**

- Absorbs unwanted chemicals, odors, and flavors from the water
- Blended medias may be used to resolve multiple issues
- Backwash cycles periodically refresh the media using only water to maintain performance
- Predictive regeneration automatically adjusts to changes in your water usage habits
- Made in the U.S.A.

***Play by your own water***  
***treatment rules with the Renegade!***



Scan to  
learn more  
[Varsity-Water.com](http://Varsity-Water.com)

